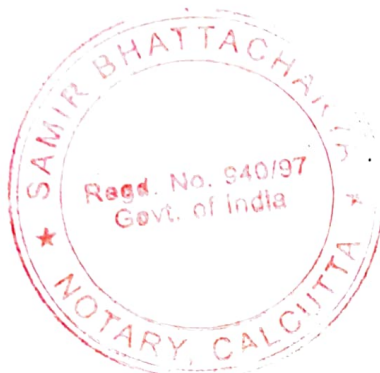




BEFORE THE HON'BLE NATIONAL GREEN TRIBUNAL
EASTERN ZONE BENCH, KOLKATA
ORIGINAL APPLICATION NO. 137/2024/EZ
(Earlier O. A. No. 608/2024/PB)



In The Matter of:

News item titled "After Bengaluru, Water crisis hits Kolkata City as Ground Water Level depletes in many areas, Residents Express concern" appearing in India.com Dated 22.04.2024 (Suo Motu)

... Applicant

Versus

State of West Bengal & Ors.

... Respondents

AFFIDAVIT ON BEHALF OF THE RESPONDENT NUMBER 04,
KOLKATA MUNICIPAL CORPORATION.

INDEX

'SL	PARTICULARS	ANNEXURE	PAGE
1.	Affidavit		1-11
2.	some of the photographs showing about the progress of the work are collectively annexed herewith	'R-1'	12-14

Filed by

Sibojyoti Chakrabarti

SIBOJYOTI CHAKRABARTI

Advocate

For The Kolkata Municipal Corporation

Email: subho.advocate@gmail.com

(M): 9007035534

06 FEB 2025



BEFORE THE HON'BLE NATIONAL GREEN TRIBUNAL
EASTERN ZONE BENCH, KOLKATA

ORIGINAL APPLICATION NO. 137/2024/EZ

(Earlier O. A. No. 608/2024/PB)



In The Matter of:

News item titled "After Bengaluru, Water crisis hits Kolkata City as Ground Water Level depletes in many areas, Residents Express concern" appearing in India.com Dated 22.04.2024 (Suo Motu)

... Applicant

Versus

State of West Bengal & Ors.

... Respondents

AFFIDAVIT ON BEHALF OF THE RESPONDENT NUMBER 04,
KOLKATA MUNICIPAL CORPORATION.

I, Sri Biswajit Biswas, S/o Late Jatindranath Biswas, aged about 59 years, by faith-Hindu, by occupation-service, and presently posted as Deputy Chief Engineer (Mechanical), Water Supply department, Kolkata Municipal Corporation, having office at 5, S. N. Banerjee Road, Kolkata: 700013, do hereby solemnly affirm and declare as follows:-

1. That, I am presently posted as Deputy Chief Engineer (Mechanical), Water Supply department, Kolkata Municipal Corporation, having office at 5, S. N. Banerjee Road, Kolkata: 700013 Kolkata Municipal Corporation, and I am well acquainted with the facts and circumstances of the case and I

have been duly authorised to swear, sign and affirm this affidavit.

2. That this affidavit is filed in compliance to the Solemn Order dated 05.12.2024, passed by the Hon'ble National Green Tribunal, Eastern Zone Bench, Kolkata.
3. That in the previous affidavit dated 04.12.2024 submitted on behalf of the Kolkata Municipal Corporation it has been interalia stated the Kolkata Municipal Corporation has provided portable water supply almost in every part of the city. About 5 (Five) lakh premises have been provided with piped water connection as of now which is about 98% of the city population.
4. That with regard to the Design, Construction, Commissioning, Operation and Maintenance for 60 months for 20 MGD capacity WTP with 5.0 MG capacity CWR cum Pump House including 1.5MG capacity RW sump cum Pump House and Sludge Handling System with Centrifuge at Jai Hind Jal Prakalpa complex on Turnkey basis, the details of which are stated as below:

Date: Opening:	26.01.2021
LoI:	28.11.2022
Time:	27months
Expected	December,2025



5. That with regard to the Design, Construction, Commissioning, Operation and Maintenance for 60 months for 10 MGD capacity WTP with 5.0 MG capacity CWR cum pump House including 1.5MG capacity RW sump cum Pump House and Sludge Handling System with Centrifuge on EM Bypass near the junction of Garia Station Road on Turkey basis, the details of which are stated below:

Date:	Opening:	12.10.2023
	LoI:	19.02.2024

Time: 27Months
Expected: March,2026



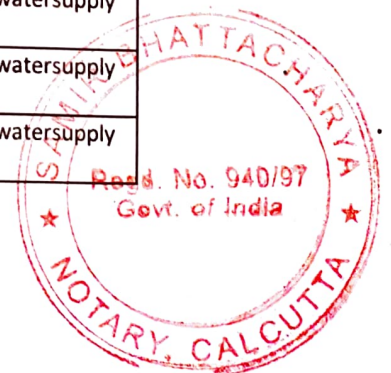
6. That the Ward Number wise water supply for the city of Kolkata is stated as below:

Ward Number	Existing Pipe Line for Supply of Water	Nature of Supply
1	100% covered by Water Supply Pipe Network	Surface water supply
2	100% covered by Water Supply Pipe Network	Surface water supply
3	100% covered by Water Supply Pipe Network	Surface water supply
4	100% covered by Water Supply Pipe Network	Surface water supply
5	100% covered by Water Supply Pipe Network	Surface water supply
6	100% covered by Water Supply Pipe Network	Surface water supply
7	100% covered by Water Supply Pipe Network	Surface water supply
8	100% covered by Water Supply Pipe Network	Surface water supply
9	100% covered by Water Supply Pipe Network	Surface water supply
10	100% covered by Water Supply Pipe Network	Surface water supply
11	100% covered by Water Supply Pipe Network	Surface water supply
12	100% covered by Water Supply Pipe Network	Surface water supply
13	100% covered by Water Supply Pipe Network	Surface water supply
14	100% covered by Water Supply Pipe Network	Surface water supply
15	100% covered by Water Supply Pipe Network	Surface water supply
16	100% covered by Water Supply Pipe Network	Surface water supply
17	100% covered by Water Supply Pipe Network	Surface water supply
18	100% covered by Water Supply Pipe Network	Surface water supply

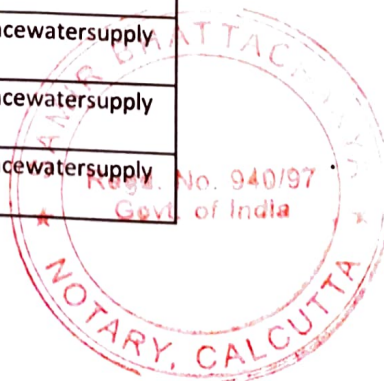
19	100% covered by Water Supply Pipe Network	Surface water supply
20	100% covered by Water Supply Pipe Network	Surface water supply
21	100% covered by Water Supply Pipe Network	Surface water supply
22	100% covered by Water Supply Pipe Network	Surface water supply
23	100% covered by Water Supply Pipe Network	Surface water supply
24	100% covered by Water Supply Pipe Network	Surface water supply



Ward	Existing Pipe Line for Supply of Water	Nature of Supply
25	100% covered by Water Supply Pipe Network	Surface water supply
26	100% covered by Water Supply Pipe Network	Surface water supply
27	100% covered by Water Supply Pipe Network	Surface water supply
28	100% covered by Water Supply Pipe Network	Surface water supply
29	100% covered by Water Supply Pipe Network	Surface water supply
30	100% covered by Water Supply Pipe Network	Surface water supply
31	100% covered by Water Supply Pipe Network	Surface water supply
32	100% covered by Water Supply Pipe Network	Surface water supply
33	100% covered by Water Supply Pipe Network	Surface water supply
34	100% covered by Water Supply Pipe Network	Surface water supply
35	100% covered by Water Supply Pipe Network	Surface water supply
36	100% covered by Water Supply Pipe Network	Surface water supply
37	100% covered by Water Supply Pipe Network	Surface water supply
38	100% covered by Water Supply Pipe Network	Surface water supply
39	100% covered by Water Supply Pipe Network	Surface water supply
40	100% covered by Water Supply Pipe Network	Surface water supply
41	100% covered by Water Supply Pipe Network	Surface water supply
42	100% covered by Water Supply Pipe Network	Surface water supply
43	100% covered by Water Supply Pipe Network	Surface water supply
44	100% covered by Water Supply Pipe Network	Surface water supply
45	100% covered by Water Supply Pipe Network	Surface water supply
46	100% covered by Water Supply Pipe Network	Surface water supply
47	100% covered by Water Supply Pipe Network	Surface water supply
48	100% covered by Water Supply Pipe Network	Surface water supply

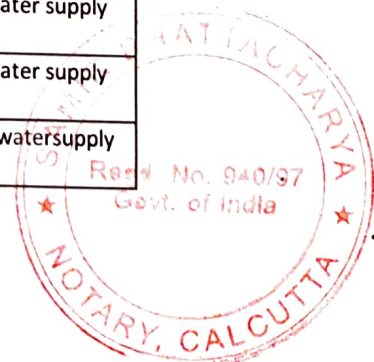


Ward	Existing Pipe Line for Supply of Water	Nature of Supply
49	100% covered by Water Supply Pipe Network	Surface water supply
50	100% covered by Water Supply Pipe Network	Surface water supply
51	100% covered by Water Supply Pipe Network	Surface water supply
52	100% covered by Water Supply Pipe Network	Surface water supply
53	100% covered by Water Supply Pipe Network	Surface water supply
54	100% covered by Water Supply Pipe Network	Surface water supply
55	100% covered by Water Supply Pipe Network	Surface water supply
56	100% covered by Water Supply Pipe Network	Surface water supply
57	100% covered by Water Supply Pipe Network	Surface water supply
58	100% covered by Water Supply Pipe Network	Mixed water supply
59	100% covered by Water Supply Pipe Network	Mixed water supply
60	100% covered by Water Supply Pipe Network	Mixed water supply
61	100% covered by Water Supply Pipe Network	Surface water supply
62	100% covered by Water Supply Pipe Network	Surface water supply
63	100% covered by Water Supply Pipe Network	Surface water supply
64	100% covered by Water Supply Pipe Network	Surface water supply
65	100% covered by Water Supply Pipe Network	Mixed water supply
66	100% covered by Water Supply Pipe Network	Mixed water supply
67	100% covered by Water Supply Pipe Network	Mixed water supply
68	100% covered by Water Supply Pipe Network	Mixed water supply
69	100% covered by Water Supply Pipe Network	Mixed water supply
70	100% covered by Water Supply Pipe Network	Surface water supply
71	100% covered by Water Supply Pipe Network	Surface water supply
72	100% covered by Water Supply Pipe Network	Surface water supply



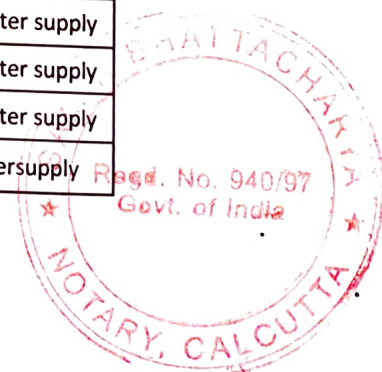
A

Ward	Existing Pipe Line for Supply of Water	Nature of Supply
73	100% covered by Water Supply Pipe Network	Surface water supply
74	100% covered by Water Supply Pipe Network	Mixed water supply
75	100% covered by Water Supply Pipe Network	Surface water supply
76	100% covered by Water Supply Pipe Network	Surface water supply
77	100% covered by Water Supply Pipe Network	Surface water supply
78	95% covered by Water Supply Pipe Network	Surface water supply
79	85% covered by Water Supply Pipe Network	Mixed water supply
80	85% covered by Water Supply Pipe Network	Surface water supply
81	92% covered by Water Supply Pipe Network	Surface water supply
82	100% covered by Water Supply Pipe Network	Surface water supply
83	100% covered by Water Supply Pipe Network	Surface water supply
84	100% covered by Water Supply Pipe Network	Mixed water supply
85	100% covered by Water Supply Pipe Network	Mixed water supply
86	100% covered by Water Supply Pipe Network	Mixed water supply
87	98% covered by Water Supply Pipe Network	Surface water supply
88	95% covered by Water Supply Pipe Network	Mixed water supply
89	100% covered by Water Supply Pipe Network	Surface water supply
90	100% covered by Water Supply Pipe Network	Surface water supply
91	100% covered by Water Supply Pipe Network	Mixed water supply
92	100% covered by Water Supply Pipe Network	Mixed water supply
93	100% covered by Water Supply Pipe Network	Mixed water supply
94	100% covered by Water Supply Pipe Network	Mixed water supply
95	100% covered by Water Supply Pipe Network	Mixed water supply
96	100% covered by Water Supply Pipe Network	Surface water supply

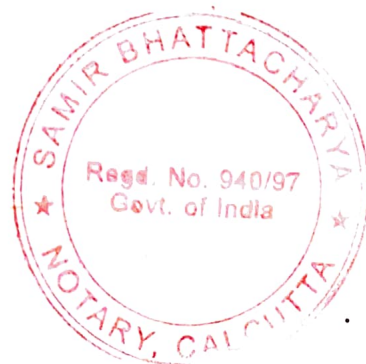


9

Ward	Existing Pipe Line for Supply of Water	Nature of Supply
97	100% covered by Water Supply Pipe Network	Mixed water supply
98	100% covered by Water Supply Pipe Network	Mixed water supply
99	100% covered by Water Supply Pipe Network	Mixed water supply
100	100% covered by Water Supply Pipe Network	Mixed water supply
101	99% covered by Water Supply Pipe Network	Mixed water supply
102	99% covered by Water Supply Pipe Network	Mixed water supply
103	99% covered by Water Supply Pipe Network	Filtered water supply
104	96% covered by Water Supply Pipe Network	Mixed water supply
105	100% covered by Water Supply Pipe Network	Mixed water supply
106	98% covered by Water Supply Pipe Network	Mixed water supply
107	97% covered by Water Supply Pipe Network	Mixed water supply
108	80% covered by Water Supply Pipe Network	Mixed water supply
109	98% covered by Water Supply Pipe Network	Mixed water supply
110	98% covered by Water Supply Pipe Network	Mixed water supply
111	98% covered by Water Supply Pipe Network	Mixed water supply
112	98% covered by Water Supply Pipe Network	Mixed water supply
113	98% covered by Water Supply Pipe Network	Mixed water supply
114	98% covered by Water Supply Pipe Network	Mixed water supply
115	100% covered by Water Supply Pipe Network	Surface water supply
116	100% covered by Water Supply Pipe Network	Surface water supply
117	100% covered by Water Supply Pipe Network	Surface water supply
118	100% covered by Water Supply Pipe Network	Surface water supply
119	100% covered by Water Supply Pipe Network	Surface water supply
120	100% covered by Water Supply Pipe Network	Surface water supply
121	100% covered by Water Supply Pipe Network	Surface water supply
122	90% covered by Water Supply Pipe Network	Mixed water supply



Ward	Existing Pipe Line for Supply of Water	Nature of Supply
123	95% covered by Water Supply Pipe Network	Mixed water supply
124	89% covered by Water Supply Pipe Network	Mixed water supply
125	91% covered by Water Supply Pipe Network	Mixed water supply
126	90% covered by Water Supply Pipe Network	Mixed water supply
127	65% covered by Water Supply Pipe Network	Mixed water supply
128	100% covered by Water Supply Pipe Network	Mixed water supply
129	100% covered by Water Supply Pipe Network	Surface water supply
130	100% covered by Water Supply Pipe Network	Surface water supply
131	100% covered by Water Supply Pipe Network	Surface water supply
132	100% covered by Water Supply Pipe Network	Surface water supply
133	95% covered by Water Supply Pipe Network	Mixed water supply
134	93% covered by Water Supply Pipe Network	Surface water supply
135	95% covered by Water Supply Pipe Network	Mixed water supply
136	90% covered by Water Supply Pipe Network	Mixed water supply
137	97% covered by Water Supply Pipe Network	Surface water supply
138	95% covered by Water Supply Pipe Network	Surface water supply
139	85% covered by Water Supply Pipe Network	Mixed water supply
140	85% covered by Water Supply Pipe Network	Mixed water supply
141	85% covered by Water Supply Pipe Network	Mixed water supply
142	85% covered by Water Supply Pipe Network	Mixed water supply
143	90% covered by Water Supply Pipe Network	Mixed water supply
144	92% covered by Water Supply Pipe Network	Mixed water supply



- 7. That some of the photographs showing about the progress of the work are collectively annexed herewith and marked with the letter 'R-1'
- 8. That the deponent craves leave of this Hon'ble Tribunal to file supplementary affidavit as may be necessary for the smooth adjudication of the instant original application.
- 9. That it is therefore respectfully prayed that Hon'ble Tribunal may pass such order/orders as it deems fit and proper in the interest of justice.

Identified by me
Sibgijoti Chakrabarti
 Advocate
 For The K.M.C
 06.02.2025

Sirrajit Das
 Deponent
 Dy. Chief Engineer-II
 Water Supply Department
 Kolkata Municipal Corporation



VERIFICATION

I, the deponent within named state that this affidavit is verified at Kolkata by the deponent above named on this the 6th day of February, 2025 and say that the contents of this affidavit made in paragraph nos. 1 is true to my knowledge and those made in paragraphs no. 2 to 8, are true to my information derived from records and rest are my respectful submission before this Hon'ble Tribunal.

Identified by me
Sibgijoti Chakrabarti
 Advocate
 For The K.M.C
 06.02.2025



Sirrajit Das
 Deponent
 Dy. Chief Engineer-II
 Water Supply Department
 Kolkata Municipal Corporation

Samir Bhattacharya
 Notary Govt. of India
 Regd. No. 940/97
 City Civil Court, Calcutta

Solemnly Affirmed and
 Declared before me U/S 139
 CPC, U/S 297 (C) CRPC

06.2.25 Notary

06 FEB 2025

The above photo are for
20 MGD WTP at Dhapa



The above photo are for
20 MGD WTP at Dhapa

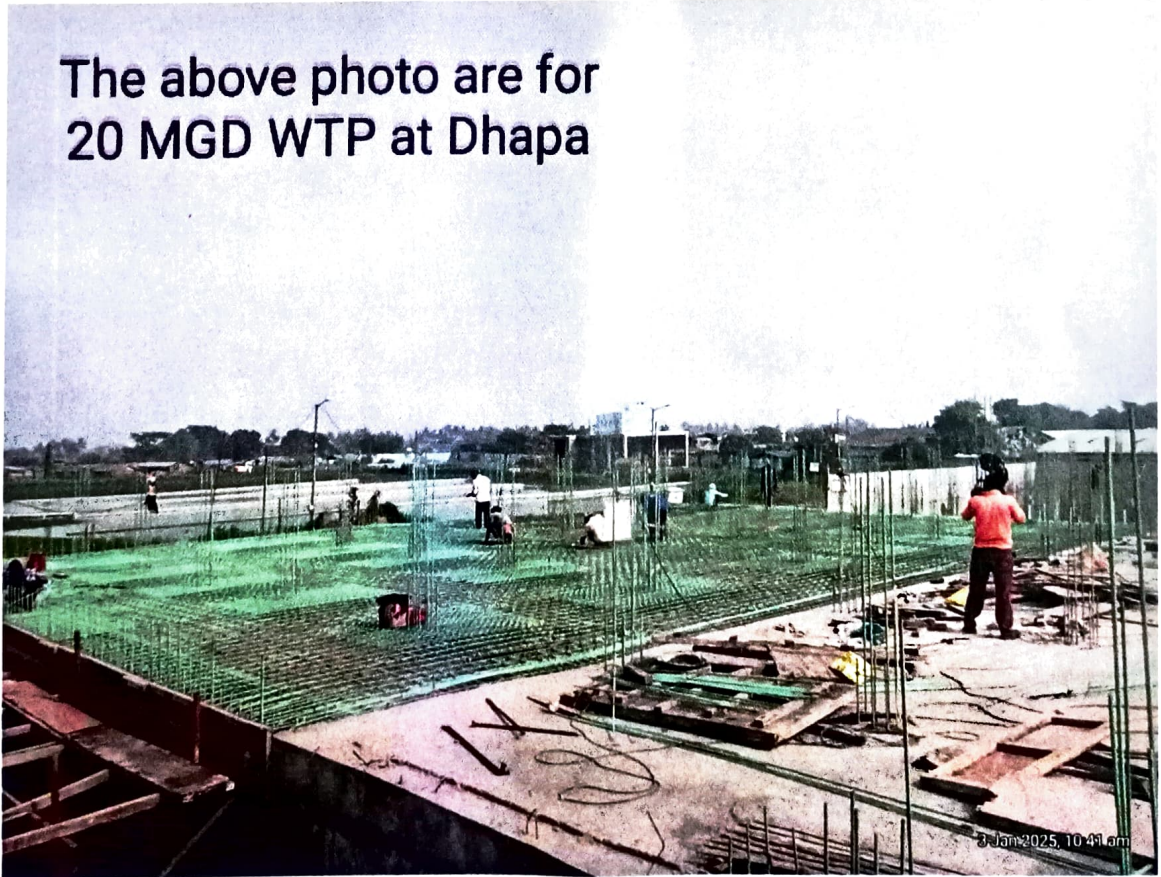


13

The above photo are for
20 MGD WTP at Dhapa



The above photo are for
20 MGD WTP at Dhapa



The above photo are for
20 MGD WTP at Dhapa



BEFORE THE HON'BLE NATIONAL
GREEN TRIBUNAL

EASTERN ZONE BENCH, KOLKATA

ORIGINAL APPLICATION NO.
137/2024/EZ

(Earlier O. A. No. 608/2024/PB)

In The Matter of:

News item titled "After Bengaluru, Water
crisis hits Kolkata City as Ground Water
Level depletes in many areas, Residents
Express concern" appearing in
India.com Dated 22.04.2024 (Suo
Motu)

... Applicant

Versus

State of West Bengal & Ors.

... Respondents

AFFIDAVIT ON BEHALF OF THE
RESPONDENT NUMBER 04, KOLKATA
MUNICIPAL CORPORATION.

Submitted By:-

SIBOJYOTI CHAKRABARTI

Advocate

For The K.M.C

Email: subho.advocate@gmail.com

(M): 9007035534.